



**ASX:LEG**

**21 December 2010**

**ASX Announcement**

## **LEGEND SECURES TITLE OVER HIGHLY PROSPECTIVE EXTENSION OF NGOVAYANG PROJECT**

- **New permit increases the Ngovayang Project by 667km<sup>2</sup>**
- **Reprocessing of aeromagnetic data highlights magnetic features**

### **NEW PERMIT GRANTED**

Legend Mining Limited (Legend) is pleased to announce that a new exploration permit, EP221 ("Ngoyang2") was officially granted to its 90% owned subsidiary Camina SA in Cameroon on 17 December 2010. The new permit is immediately south of EP144 at the Ngovayang Project and increases the project area by 667km<sup>2</sup> to a contiguous 2,972km<sup>2</sup>, see Figures 1 & 2.

Legend Managing Director Mark Wilson said, "With the permission of the relevant authorities we included this area in our February 2010 aeromagnetic survey and, given the prospectivity highlighted in the survey, the grant is an important step in the development of the project".

### **AEROMAGNETIC DATA REPROCESSING**

Reprocessing of the aeromagnetic data has been completed aimed at highlighting features with the highest magnetic intensity, see Figure 1. This reprocessing has outlined linear magnetic features interpreted to represent stratigraphic units of itabirite or metamorphic banding associated with magnetite-bearing gneiss.

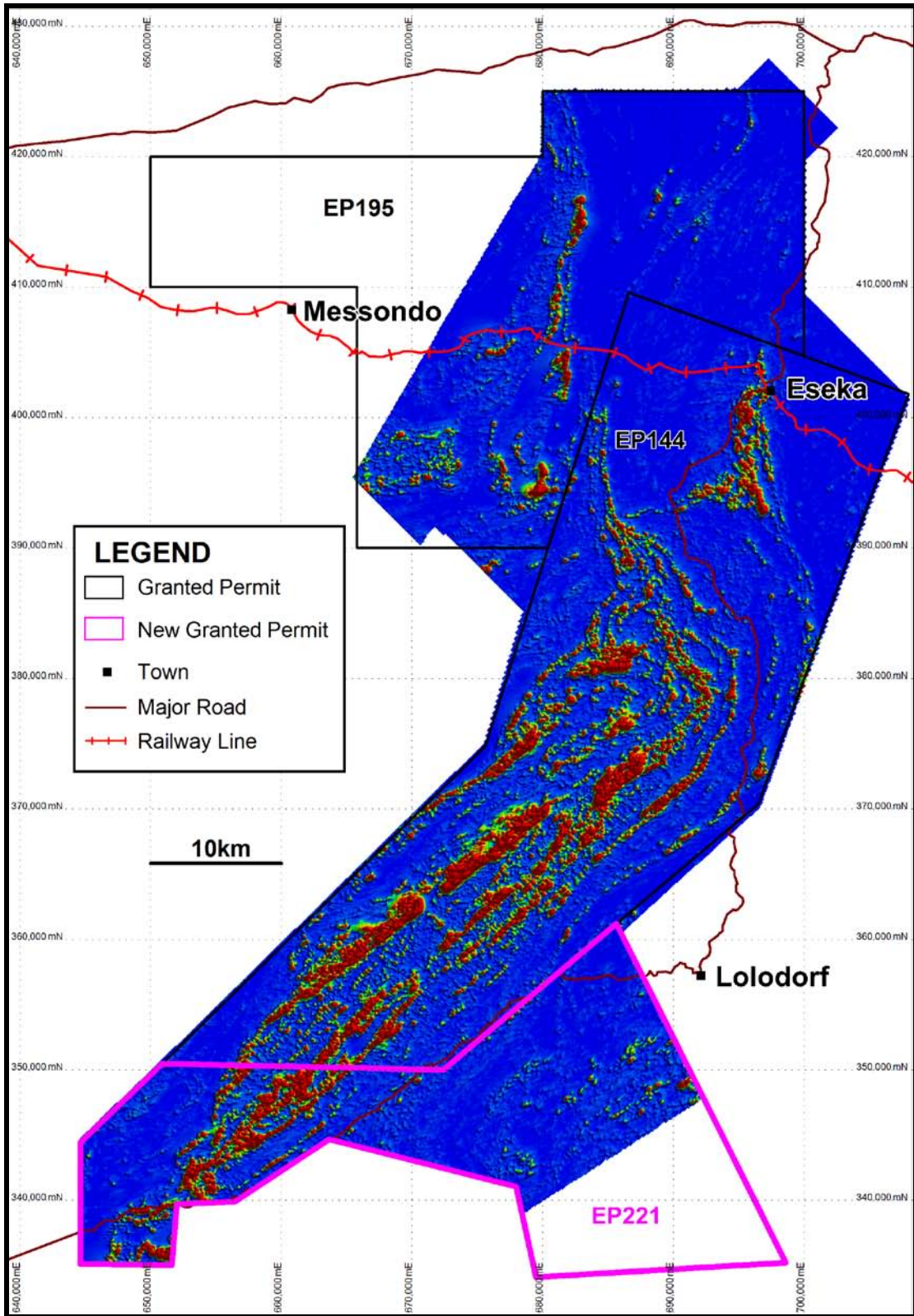
As well as defining these linear features, the magnetic image also identifies areas with structural complexity related to folding and faulting. These structural sites are very important, as they may represent locations with high grade hematite formation due to supergene/alteration processes.

Visit [www.legendmining.com.au](http://www.legendmining.com.au) for further information and announcements.

#### **For more information:**

Mr Mark Wilson  
Managing Director  
Legend Mining Limited  
Ph: (08) 9212 0600

Mr Derek Waterfield  
Exploration Manager  
Legend Mining Limited  
Ph: (08) 9212 0600



**Figure 1: Aeromagnetic Image (Analytical Signal of Total Magnetic Intensity)**

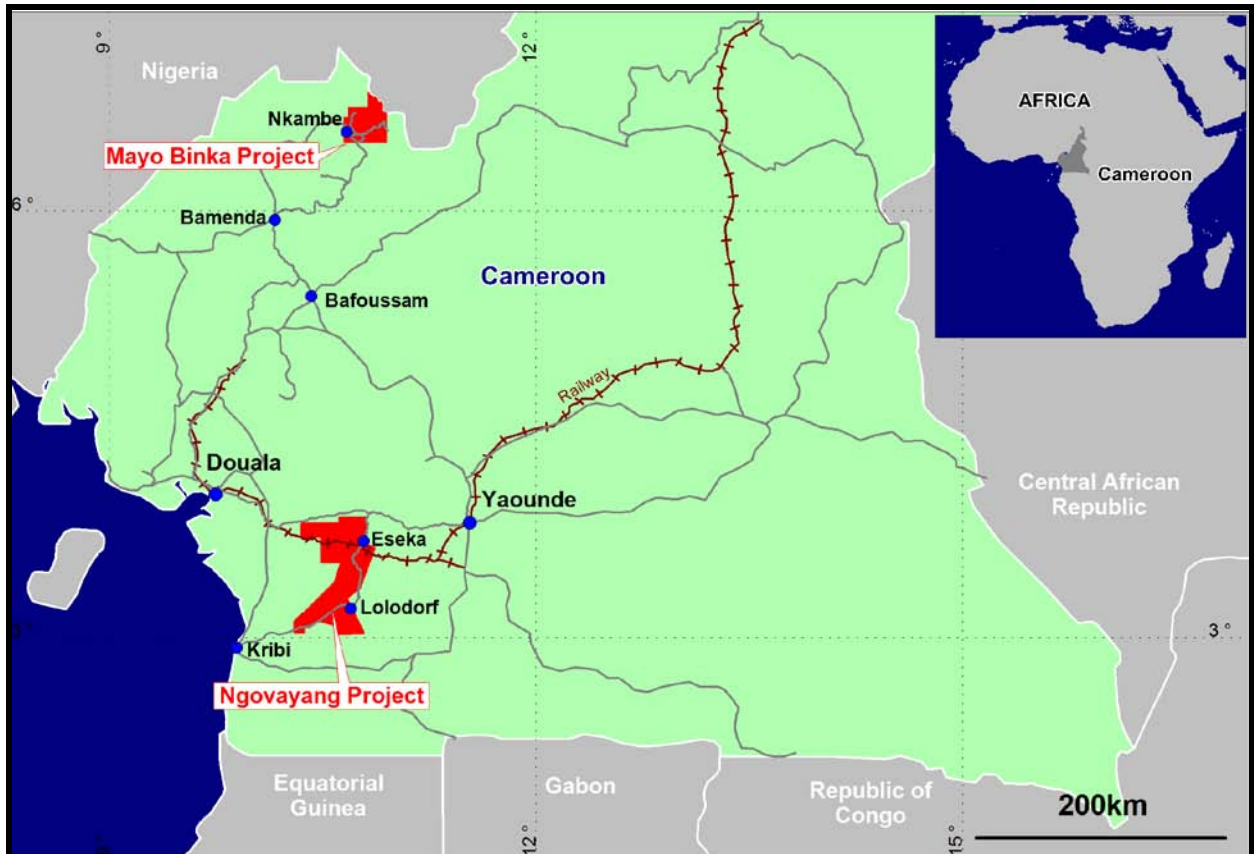


Figure 2: Cameroon Project Location