



AFRICA DOWNUNDER CONFERENCE
1-3 September 2010
Sheraton Perth Hotel



Disclaimer

This is not a disclosure document. Any material used in this presentation is a summary of selected data, and any investor in Legend Mining Limited should refer to all Legend Mining Limited ASX releases and statutory reports before considering to invest in the company.

Any forward looking information in this presentation has been prepared on the basis of a number of assumptions that may prove not to be correct. Neither Legend Mining Limited, nor its officers, employees and advisors make or give any representation, warranty or guarantee in relation to this presentation.

Legend Mining Limited reserves the right to update, amend or supplement the Information in this presentation at any time in its absolute discretion without incurring any obligation to do so.

The information in this presentation that relates to exploration results is based on information compiled by Mr. Derek Waterfield who is a member of the Australian Institute of Geoscientists and is a full-time employee of Legend Mining Limited.

Mr. Derek Waterfield has sufficient experience which is relevant to the style of mineralisation and type of deposit under consideration and to the activity which he is undertaking to qualify as a Competent Person as defined in the 2004 Edition of the 'Australasian Code for Reporting of Exploration Results, Mineral Resources and Ore Reserves' (the JORC Code).

Mr. Derek Waterfield consents to the inclusion in this presentation of the matters that relate to exploration results which in the form and context in which it appears.

Chairman

Michael Atkins



Managing Director

Mark Wilson



Non-Executive Director

Dermot Ryan





Capital Structure

Shares	1,730M
Options	400M @ 4c (04/02/2015) 30M @ 6c (04/02/2015) 11.4M Employee Options 800M Performance Options (04/02/2015)
Cash	\$16.8M (11/08/2010)
Capitalisation	\$43M (12 month range \$29-76M)



Western Australia Projects

Pilbara

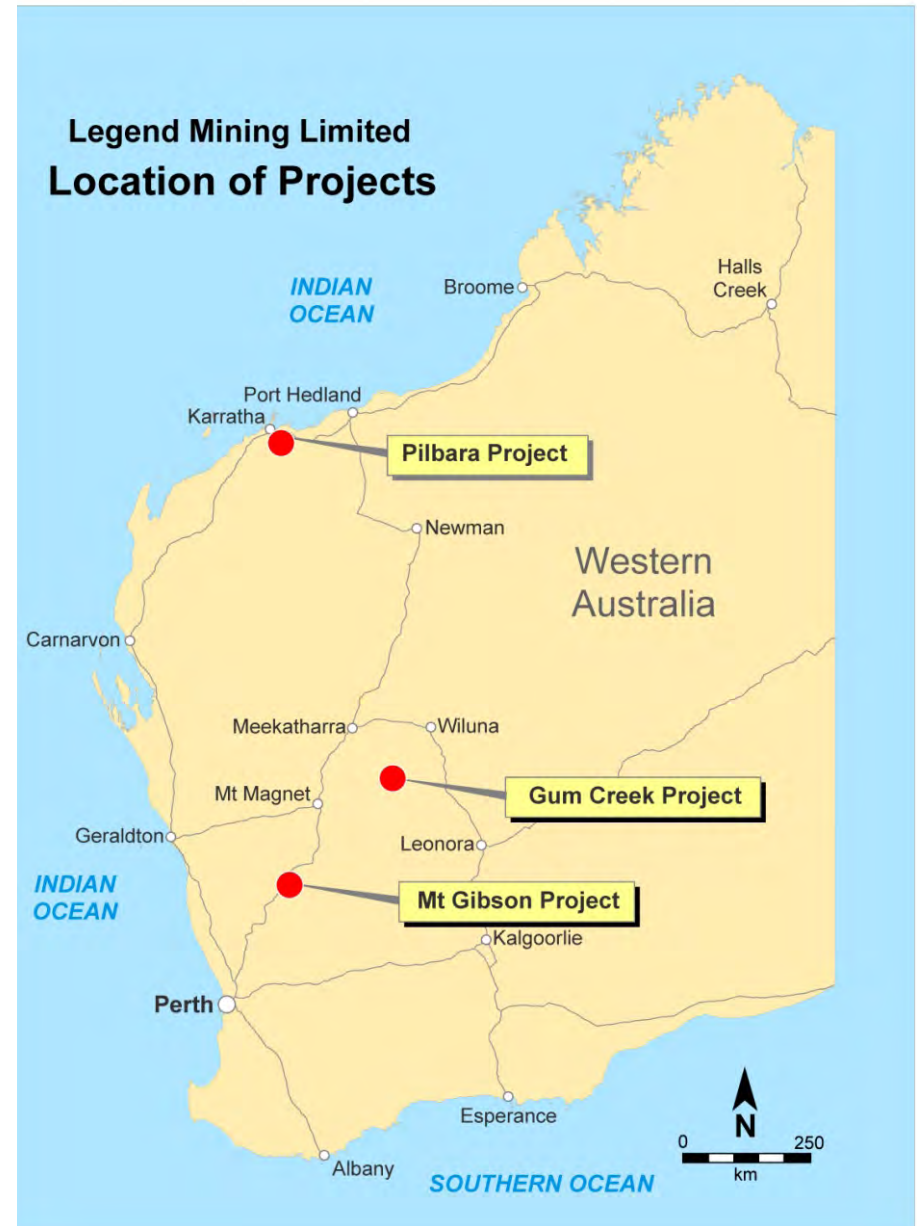
(Nickel-Copper, Zinc-Copper, Copper-Gold, Iron Ore)

Gum Creek

(Iron Ore, Nickel-Copper-Platinum Group Elements)

Mt Gibson

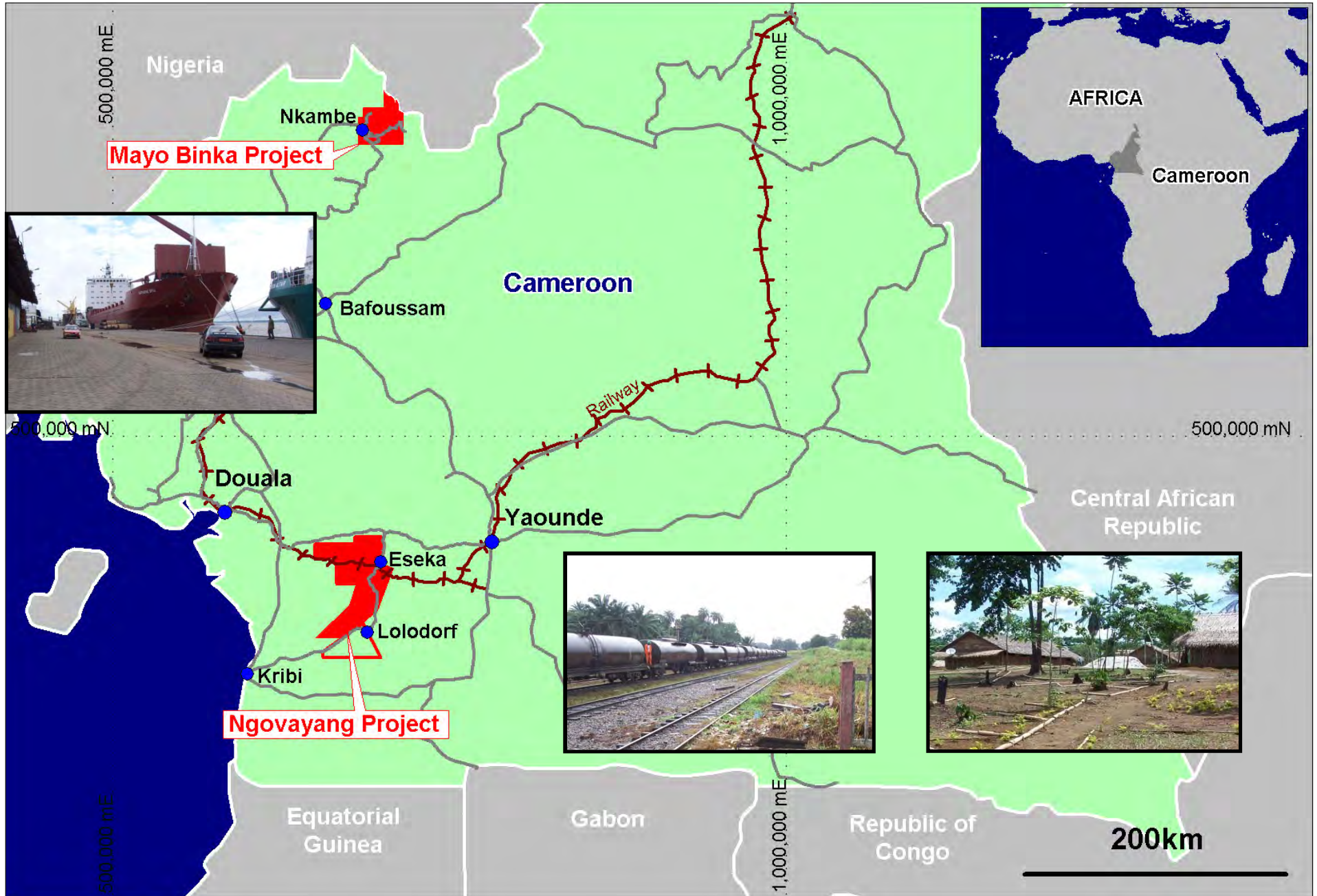
(Zinc-Copper, Gold)



- **People**
- **Existing Infrastructure**
- **Project size**
- **Iron Ore Prospectivity**

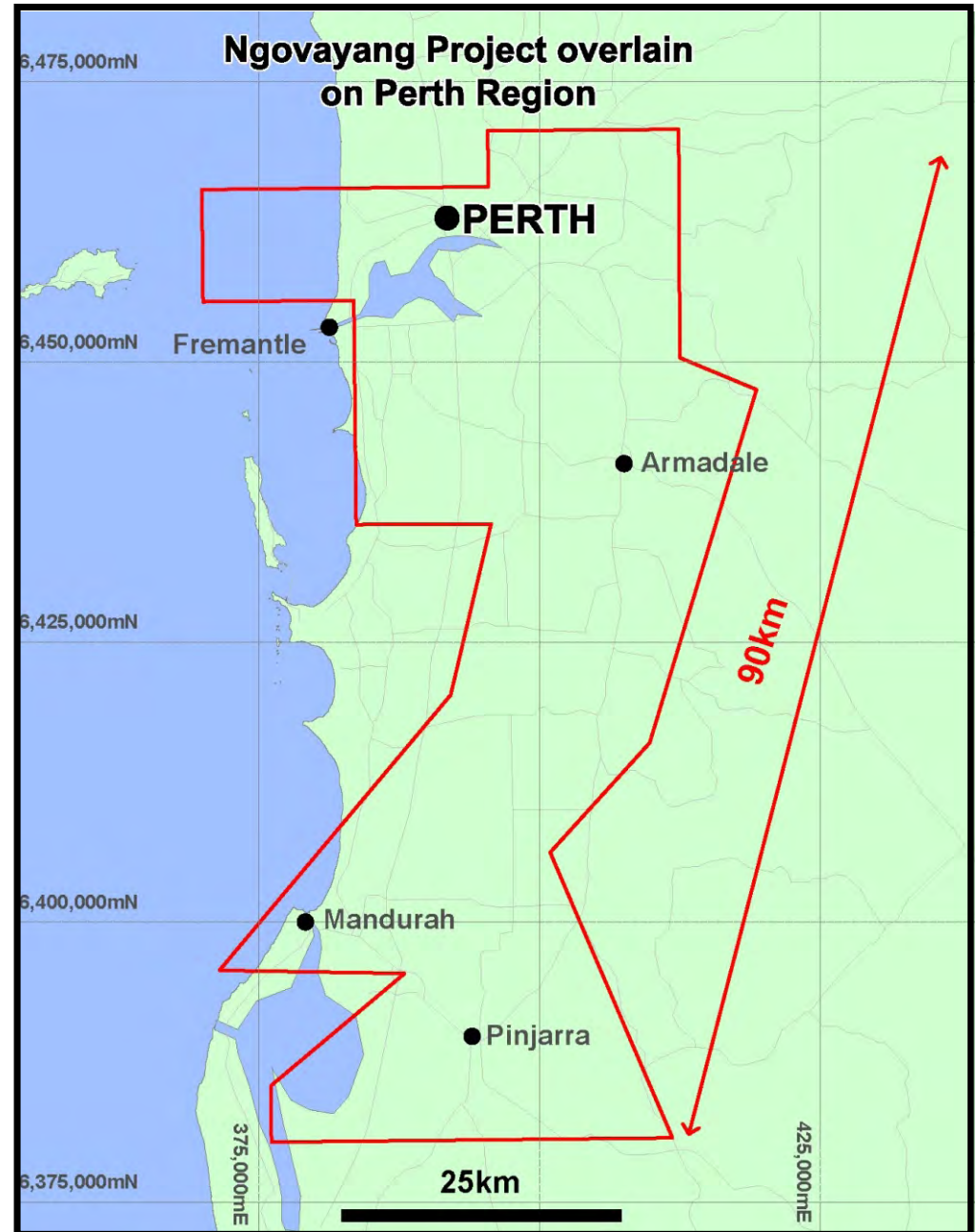
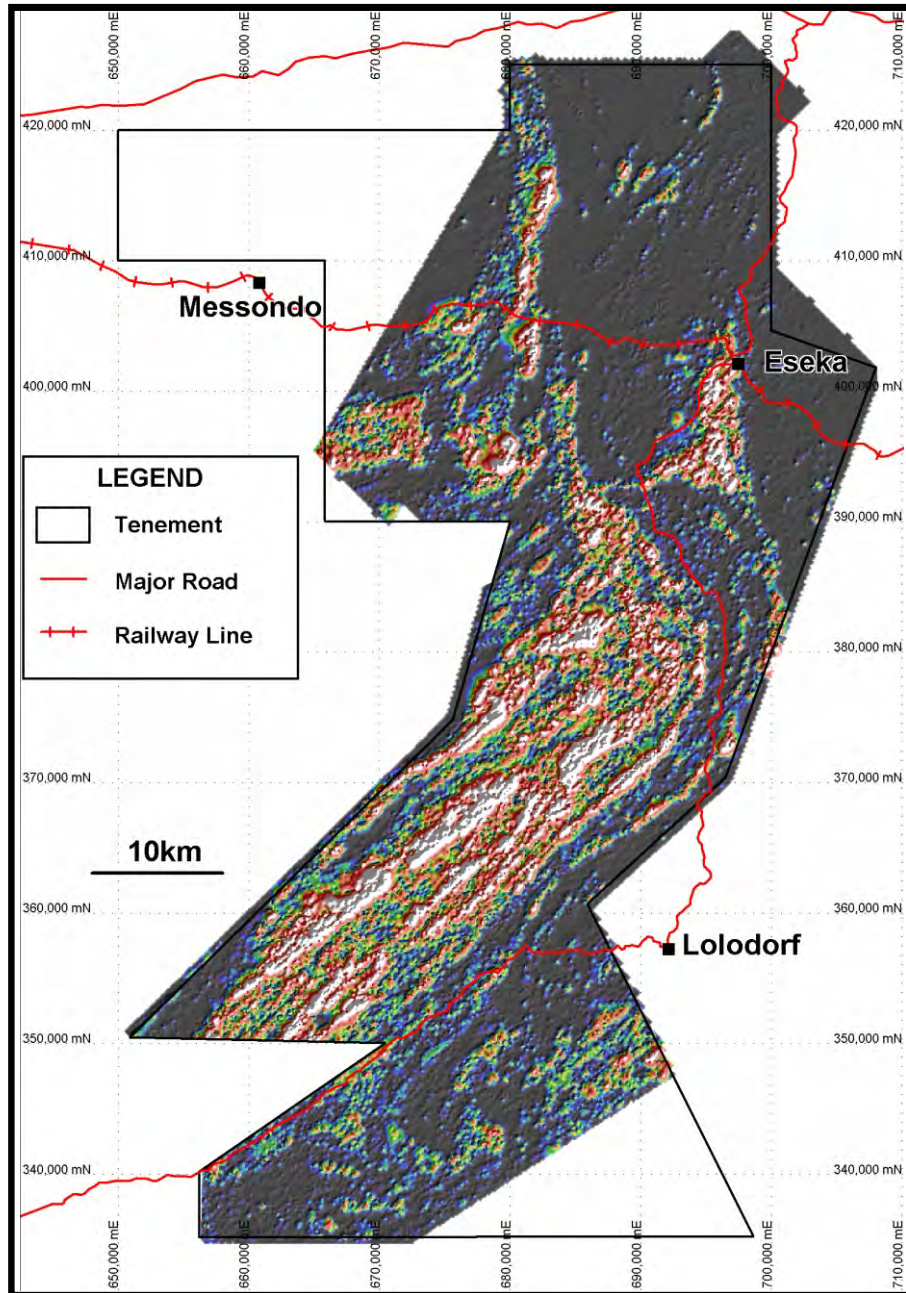


Cameroon Project Location & Infrastructure

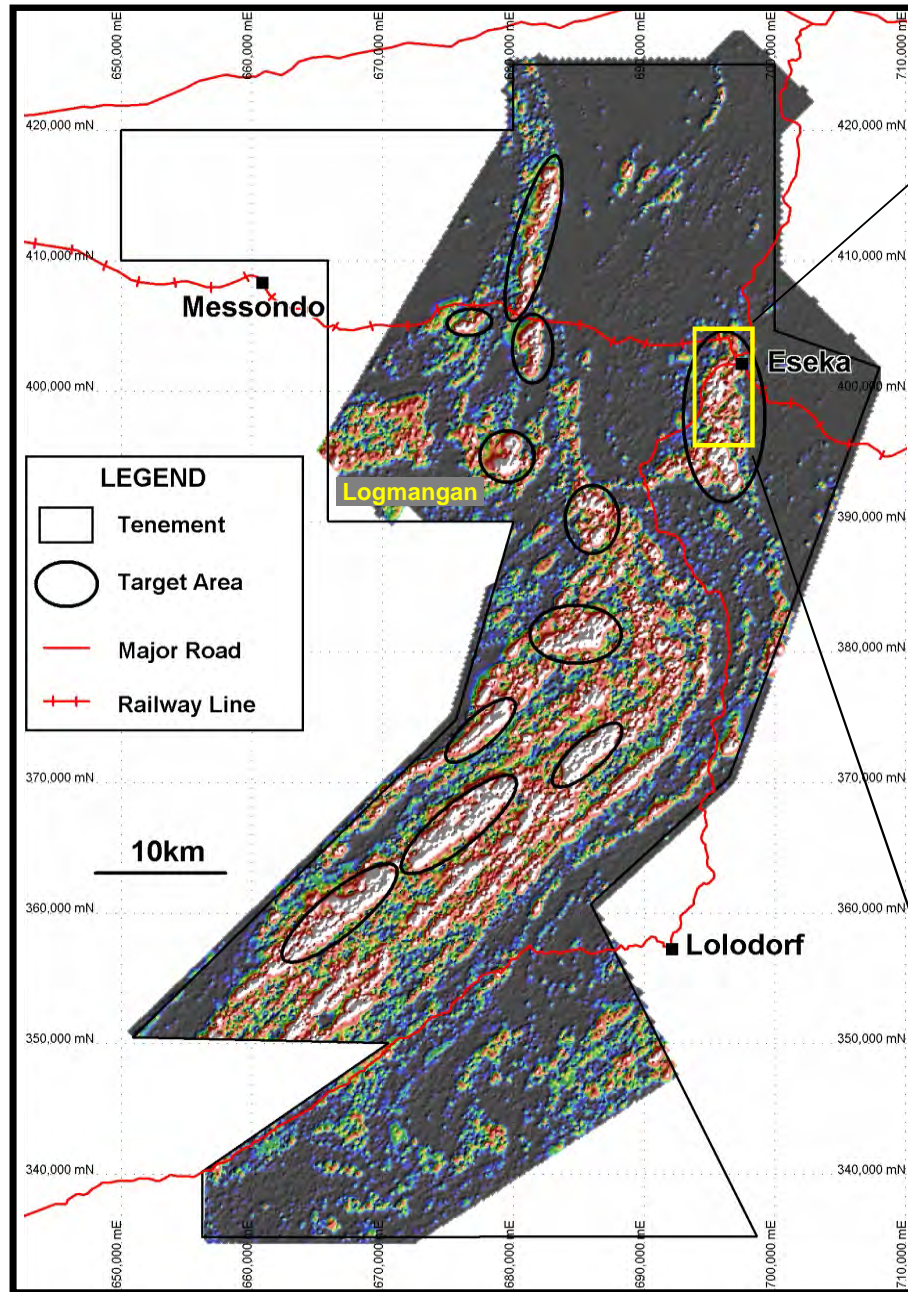


Ngovayang Project

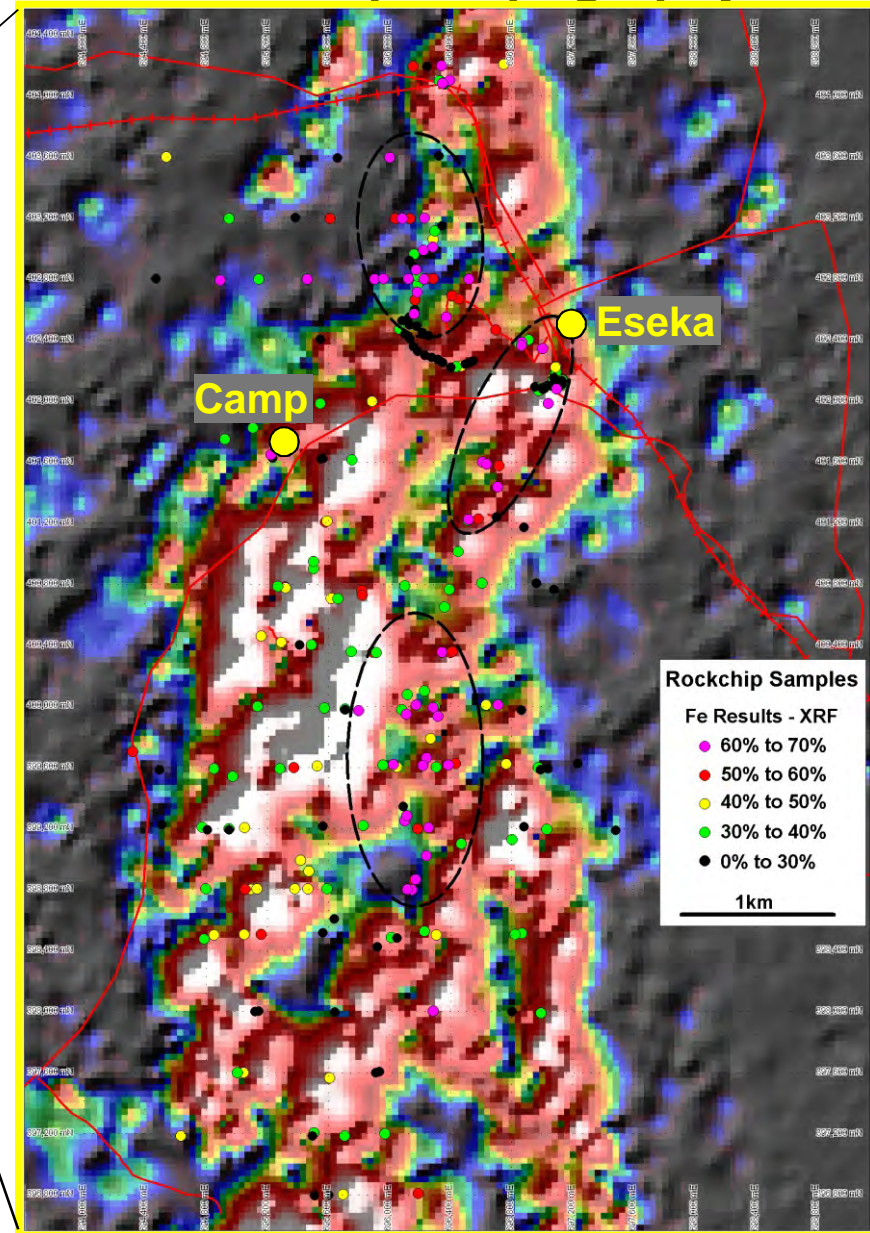
Aeromagnetic Survey/Size



Ngovayang Project Prospectivity/Target Areas



Rockchips/Topography





Exploration Upside

Drilling commenced August 2010



AFRICA DOWNUNDER CONFERENCE

1-3 September 2010

Sheraton Perth Hotel