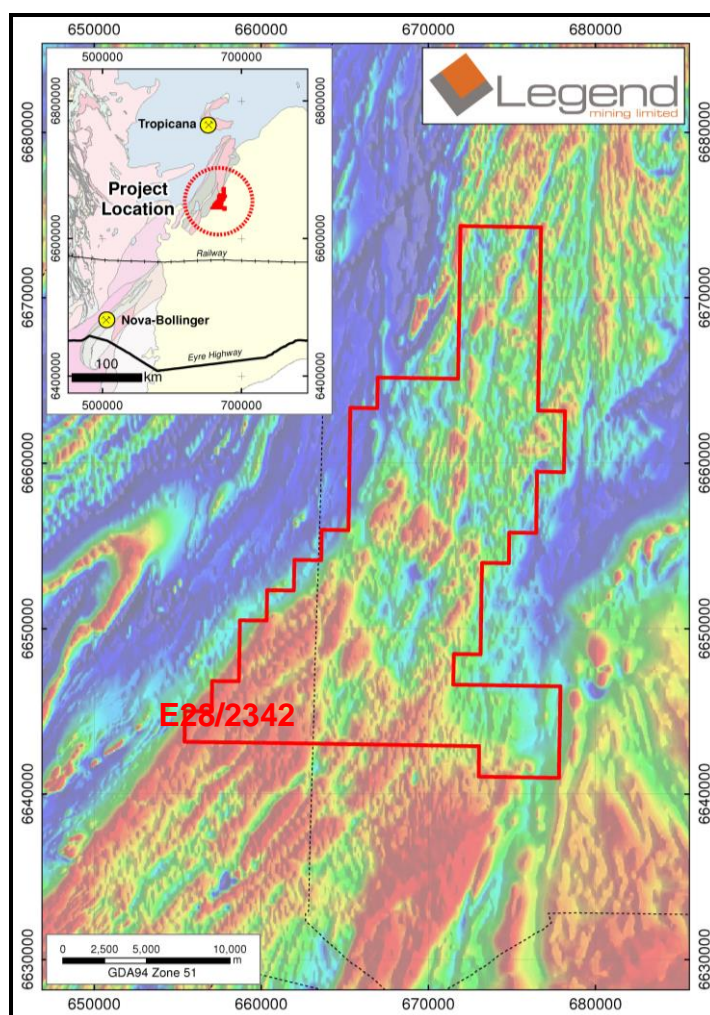


Legend Pegs Tenement in Fraser Range Belt

- **New 356km² tenement applied for within the Fraser Range Belt.**
- **Aeromagnetic interpretation indicates potential for magmatic nickel-copper mineralisation beneath transported cover.**

Legend Mining Limited ("Legend") is pleased to advise that it has applied for a 356km² tenement within the highly prospective Fraser Range Belt in Western Australia, see Figure 1.

Legend Managing Director Mr Mark Wilson said, "This tenement lies within the Fraser Range and is considered prospective for Nova-style nickel-copper and Tropicana-style structurally controlled gold mineralisation. Once historical data has been fully reviewed and the tenement granted, work programmes will be able to be planned and executed."



**Figure 1: Tenement Application E28/2342
Over Aeromagnetic Image**

Visit www.legendmining.com.au for further information and announcements.

For more information:

Mr Mark Wilson
Managing Director
Ph: (08) 9212 0600

Mr Derek Waterfield
Executive Director - Technical
Ph: (08) 9212 0600

For personal use only