

Ground EM Survey Commences in Fraser Range

Legend Mining Limited (“Legend”) advises that a major moving loop electromagnetic (“MLEM”) survey has commenced over its Fraser Range Project in Western Australia, see Figure 1. The Project is considered prospective for Nova style nickel-copper and Tropicana style gold mineralisation.

The MLEM survey is designed to test for possible conductors associated with seven priority targets previously identified through the interpretation of detailed aeromagnetic data (ASX announcement 10 July). These targets were selected on their magnetic character and are interpreted to relate to mafic/ultramafic intrusives, see Figure 2. The survey is expected to take 40-45 days to complete with ongoing monitoring of results undertaken to allow for infill if required.

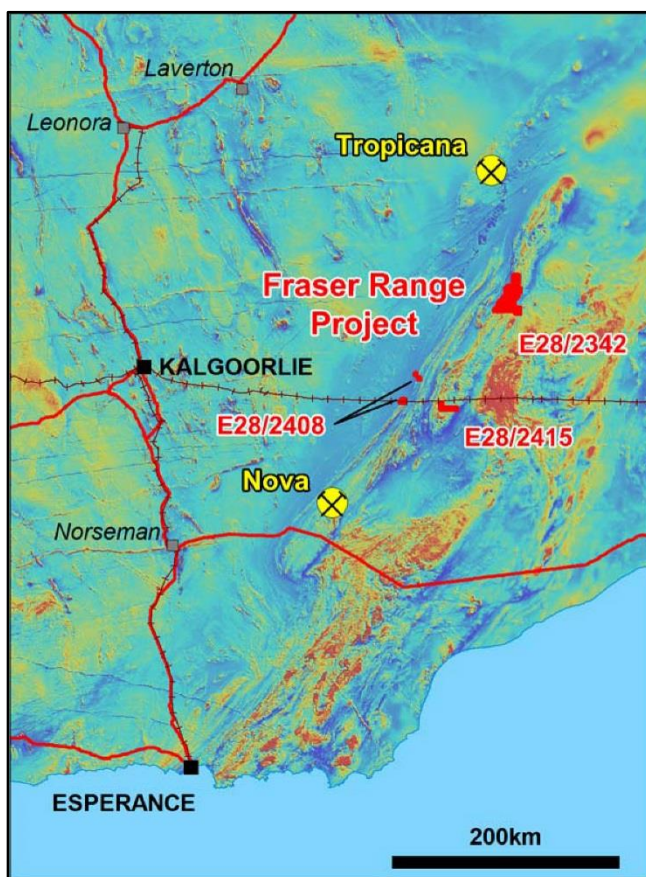


Figure 1: Project Location

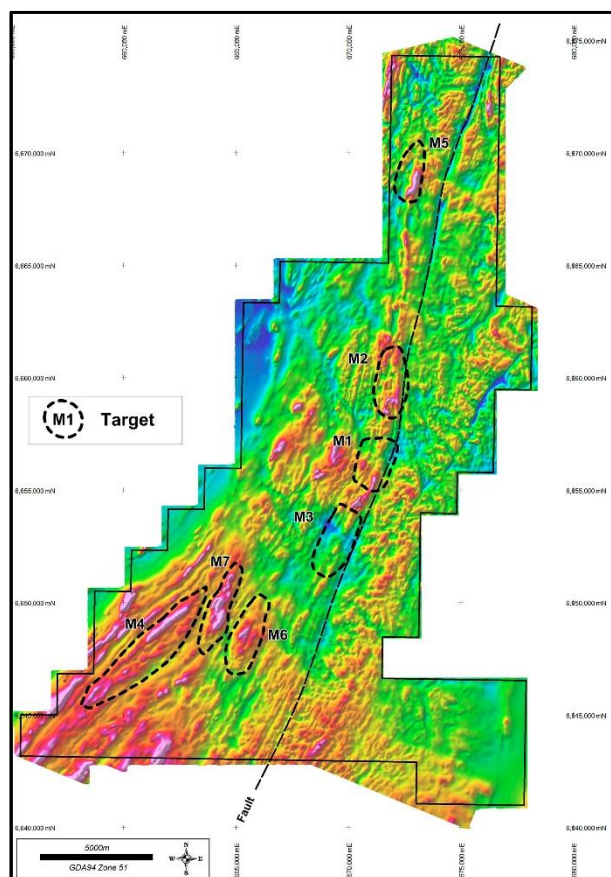


Figure 2: E28/2342 Target Areas

Visit www.legendmining.com.au for further information and announcements.

For more information:

Mr Mark Wilson
 Managing Director
 Ph: (08) 9212 0600

Mr Derek Waterfield
 Executive Director - Technical
 Ph: (08) 9212 0600

For personal use only