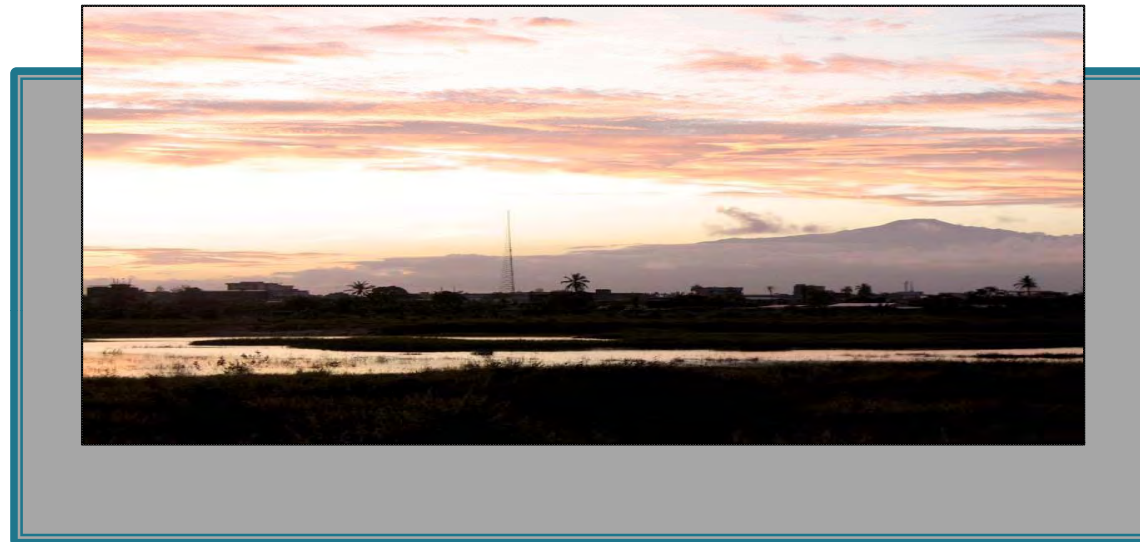


Legend Mining Limited

Level 2, 640 Murray Street, West Perth WA 6005
Tel: +61 8 9212 0600 | Fax: +61 8 9212 0611



“Ngovayang Iron Ore Project”

For personal use only

Disclaimer



This is not a disclosure document. Any material used in this presentation is a summary of selected data, and any investor in Legend Mining Limited should refer to all Legend Mining Limited ASX releases and statutory reports before considering to invest in the company.

Any forward looking information in this presentation has been prepared on the basis of a number of assumptions that may prove not to be correct. Neither Legend Mining Limited, nor its officers, employees and advisors make or give any representation, warranty or guarantee in relation to this presentation.

Legend Mining Limited reserves the right to update, amend or supplement the Information in this presentation at any time in its absolute discretion without incurring any obligation to do so.

The information in this presentation that relates to exploration results is based on information compiled by Mr Derek Waterfield who is a member of the Australian Institute of Geoscientists and is a consultant to Legend Mining Limited.

Mr Derek Waterfield has sufficient experience which is relevant to the style of mineralisation and type of deposit under consideration and to the activity which he is undertaking to qualify as a Competent Person as defined in the 2004 Edition of the 'Australasian Code for Reporting of Exploration Results, Mineral Resources and Ore Reserves' (the JORC Code).

Mr Derek Waterfield consents to the inclusion in this presentation of the matters that relate to exploration results which in the form and context in which it appears.

For personal use only

Introduction

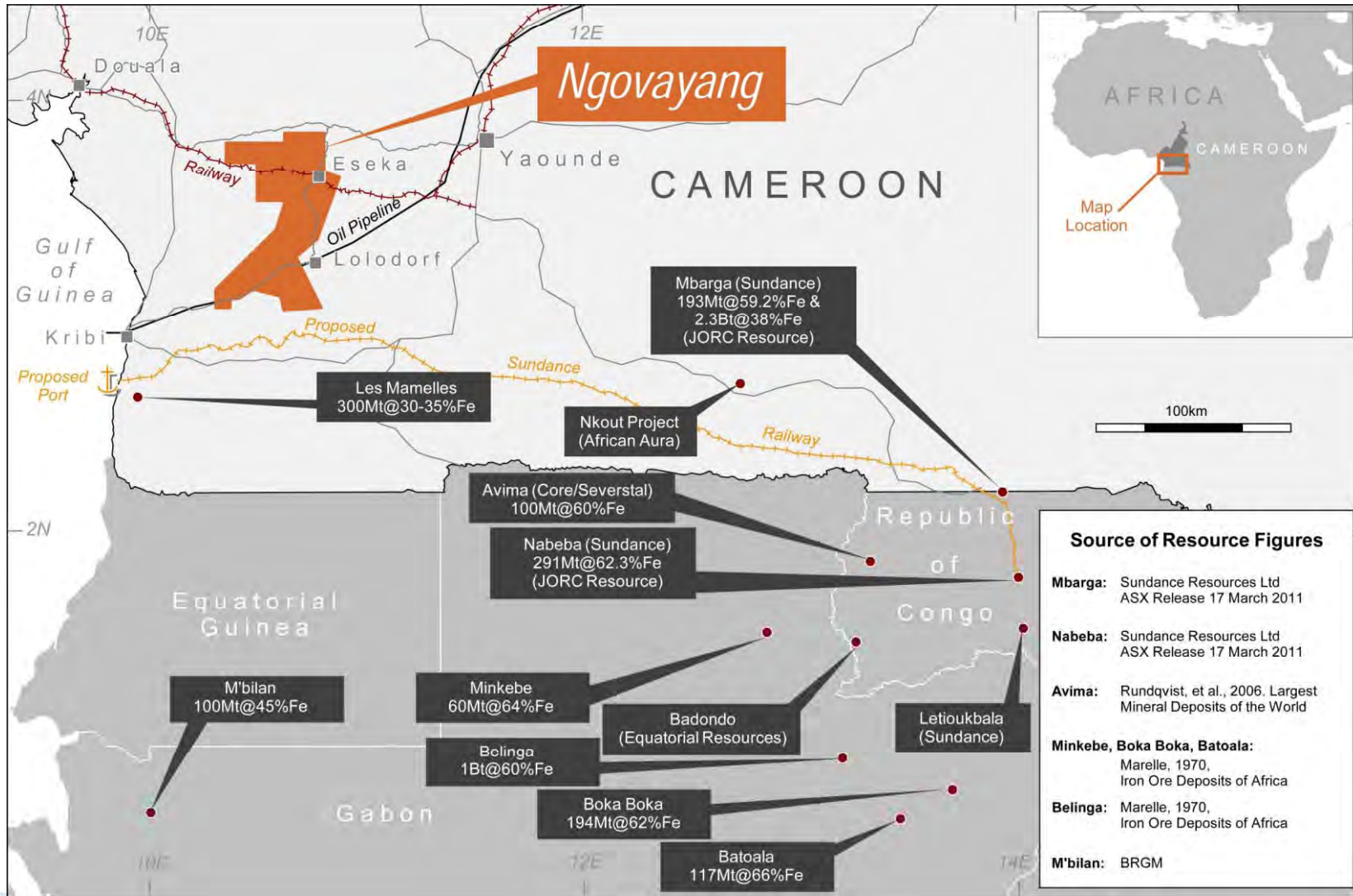


- Mineral Exploration Company with a strong cash position
- Focussed on Iron Ore in West Africa
- 3900km² in two project areas in Cameroon
- Two project areas in Western Australia
- Management strategy for growth
 - Delineate magnetite resource whilst continuing the search for DSO in Cameroon
 - Further project acquisition

Regional Iron Ore Prospective



For personal use only



Cameroon Project



People

Infrastructure



Project Size

Iron Ore Prospectivity

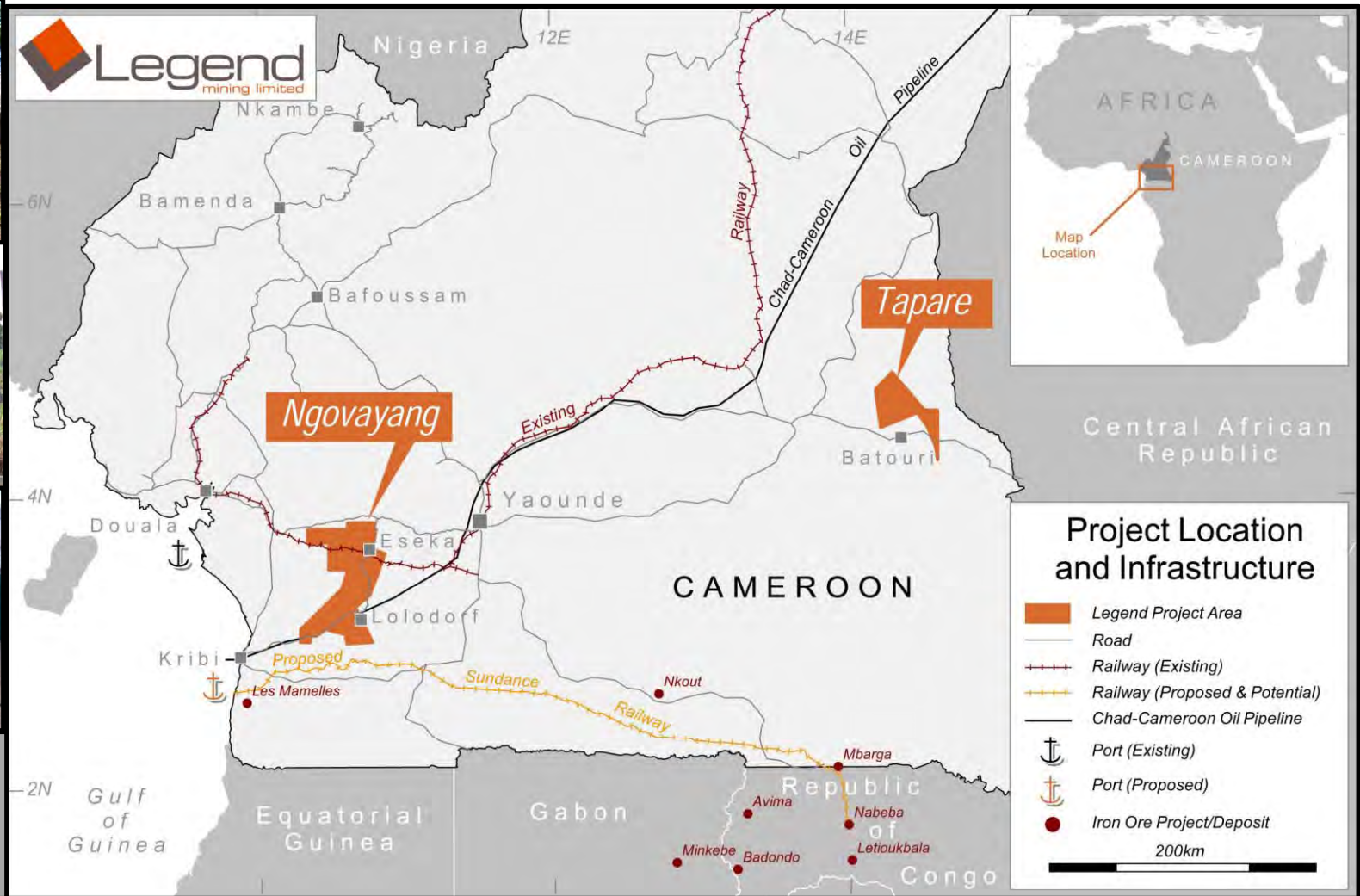
Location / Infrastructure



For personal use only



Sundance Ltd Access
Co-operation
Agreement
May 2011



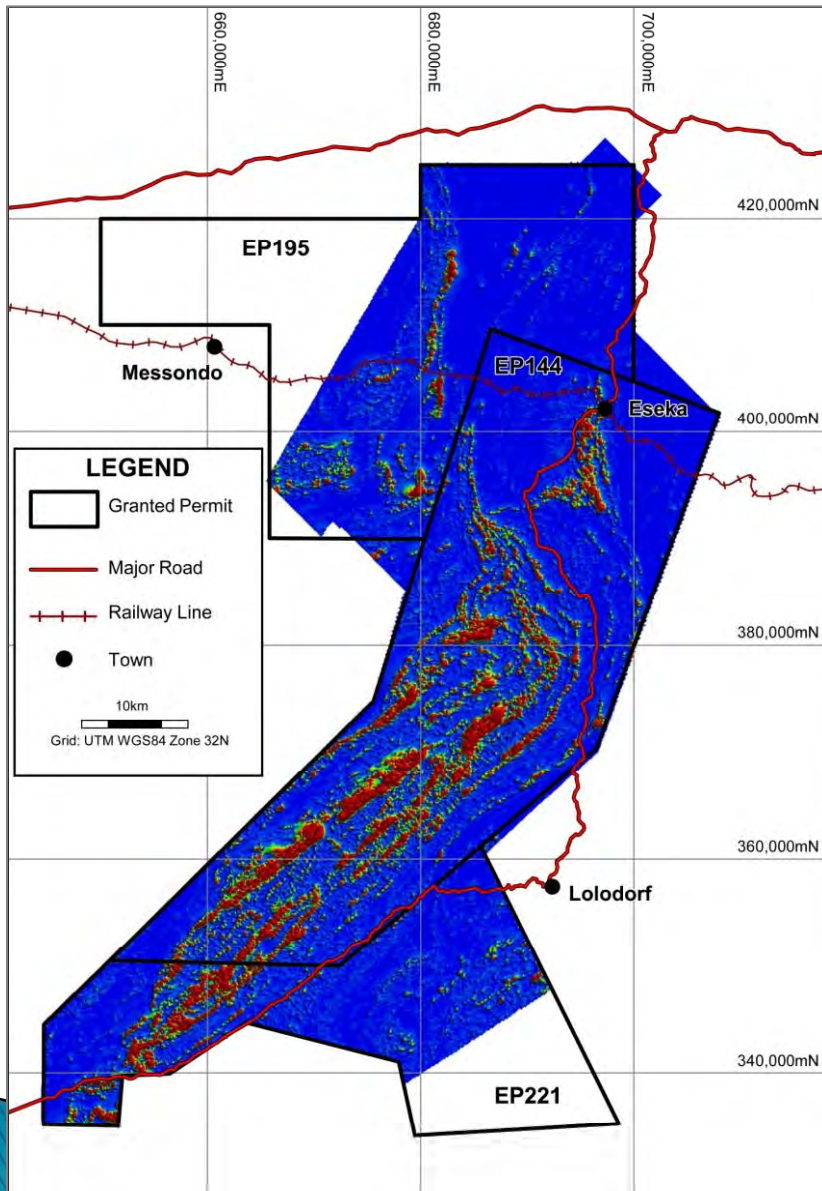
Ngovayang Project Size



For personal use only



Ngovayang Project Prospectivity



2972km² contiguous area held by three granted exploration permits

Extensive aeromagnetic survey completed February 2010

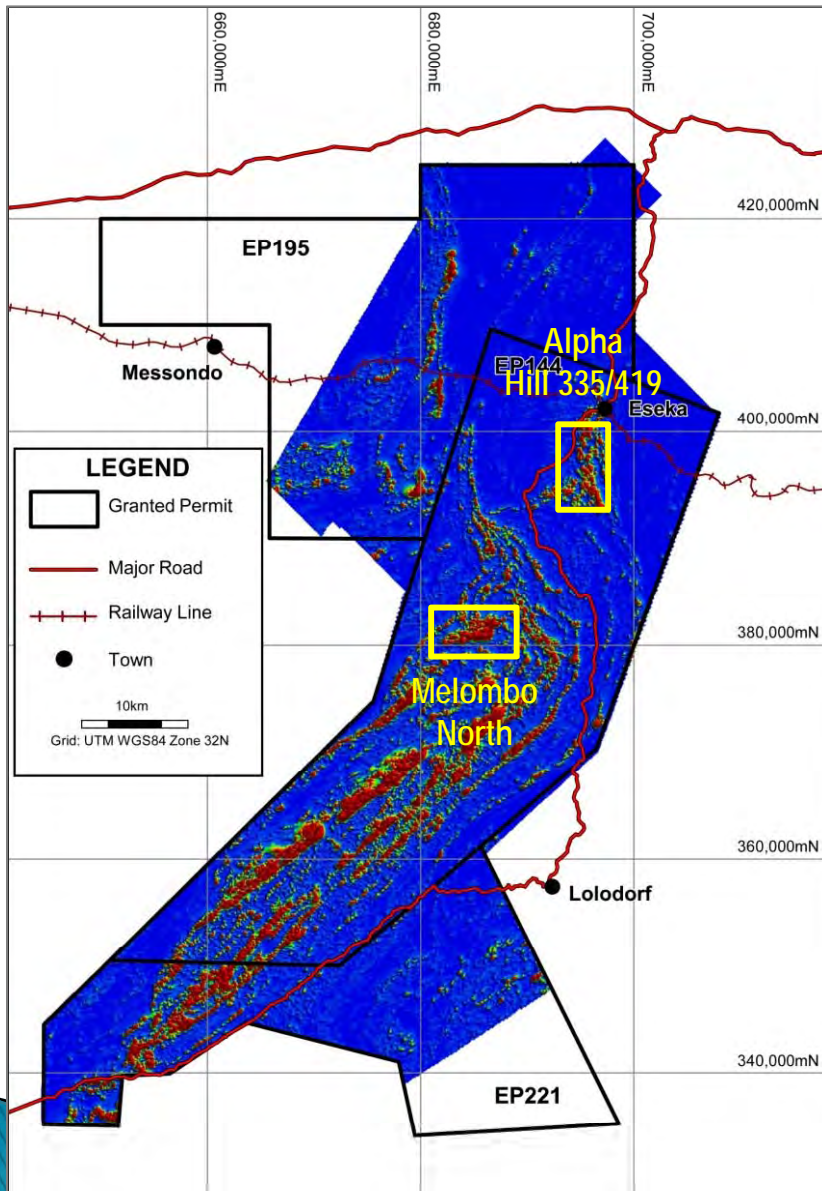
Red indicates highest total magnetic intensity

Red areas much more extensive than indicated by previous mapping (BRGM 1986)

Exploration Activity Summary

For personal use only

Ngovayang Project Prospectivity



2972km² contiguous area held by three granted exploration permits

Extensive aeromagnetic survey completed February 2010

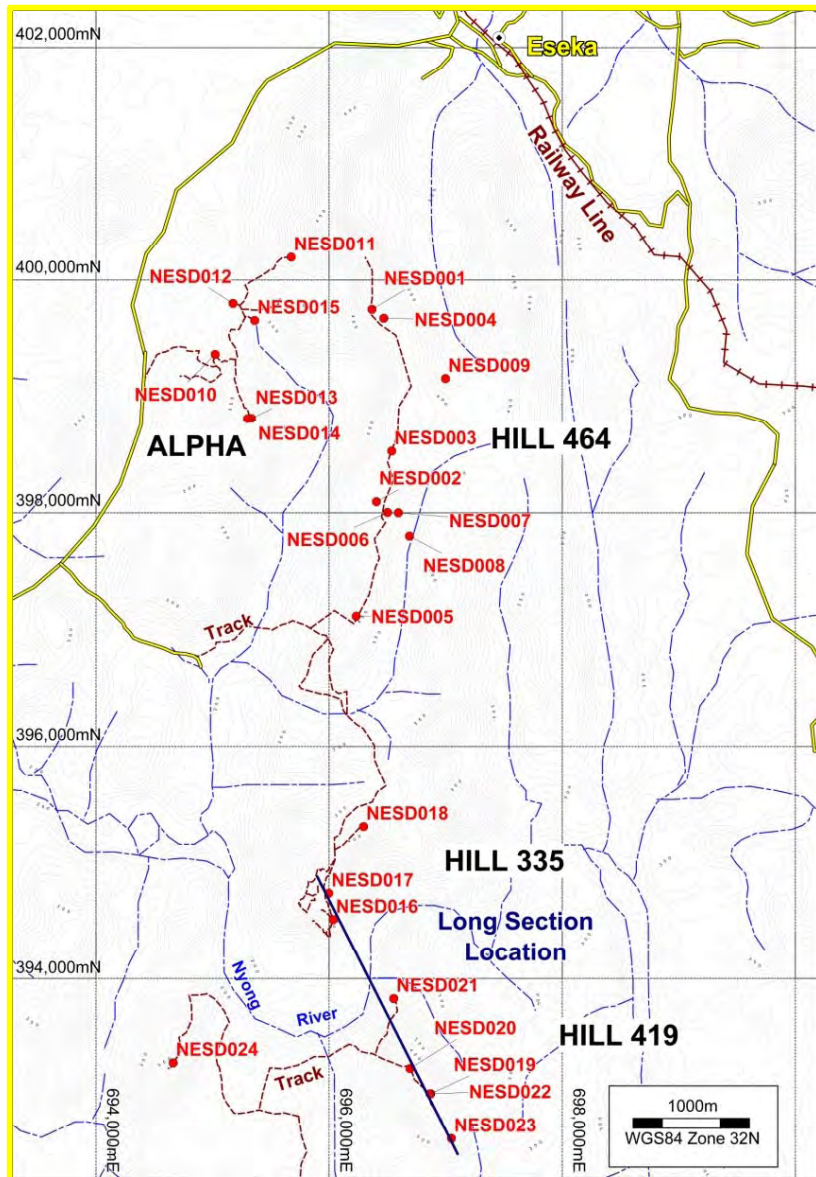
Red indicates highest total magnetic intensity

Red areas much more extensive than indicated by previous mapping (BRGM 1986)

Exploration Activity Summary

For personal use only

Ngovayang Project Eseka Region Drilling



Hill 464

- Topo/ Stratigraphic
- First indication of magnetite gneiss

Alpha

- First Mag Target
- Metallurgical sample from hole NESD011

Hill 335

- Mag Target
- Outcrop Geology
- See section next slide

Hill 419

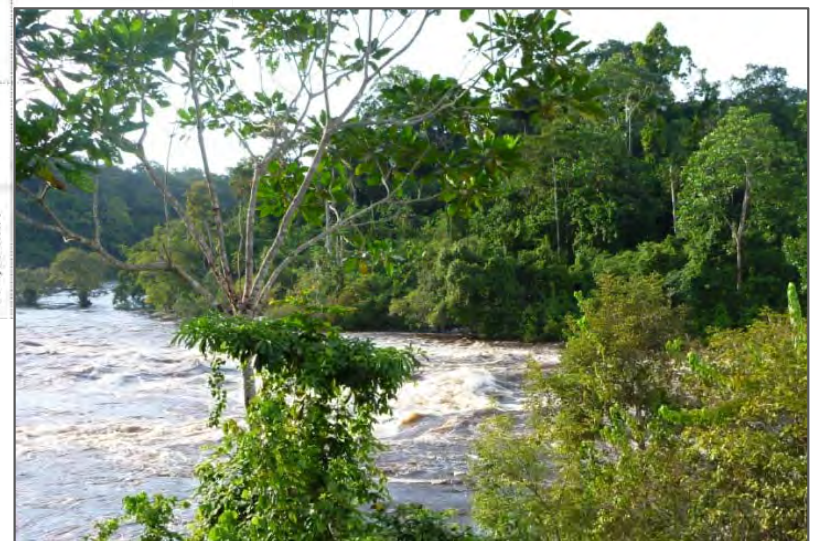
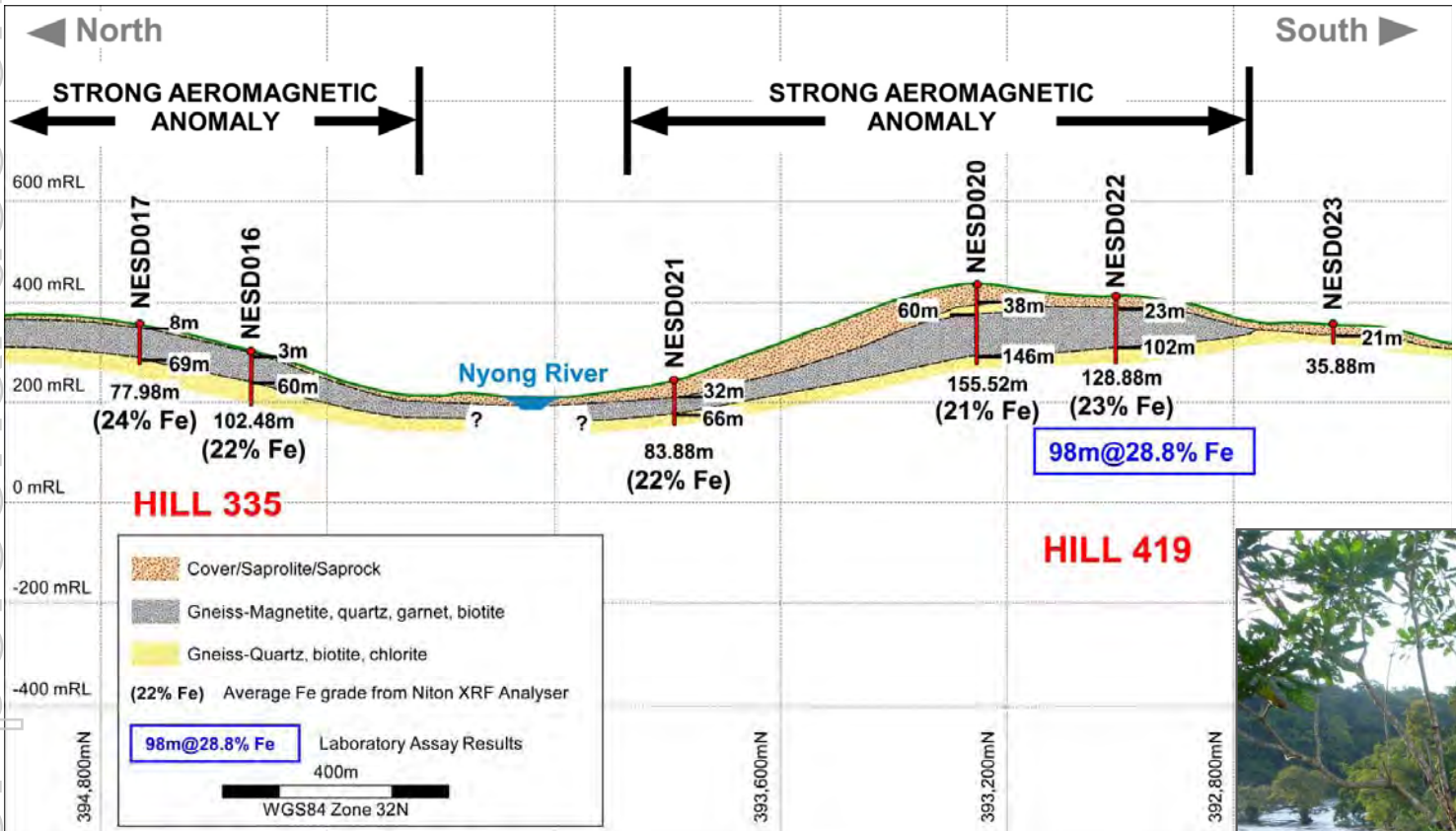
- Mag Target
- See section next slide

For personal use only

Ngovayang Project Hill 335 - Hill 419 Section

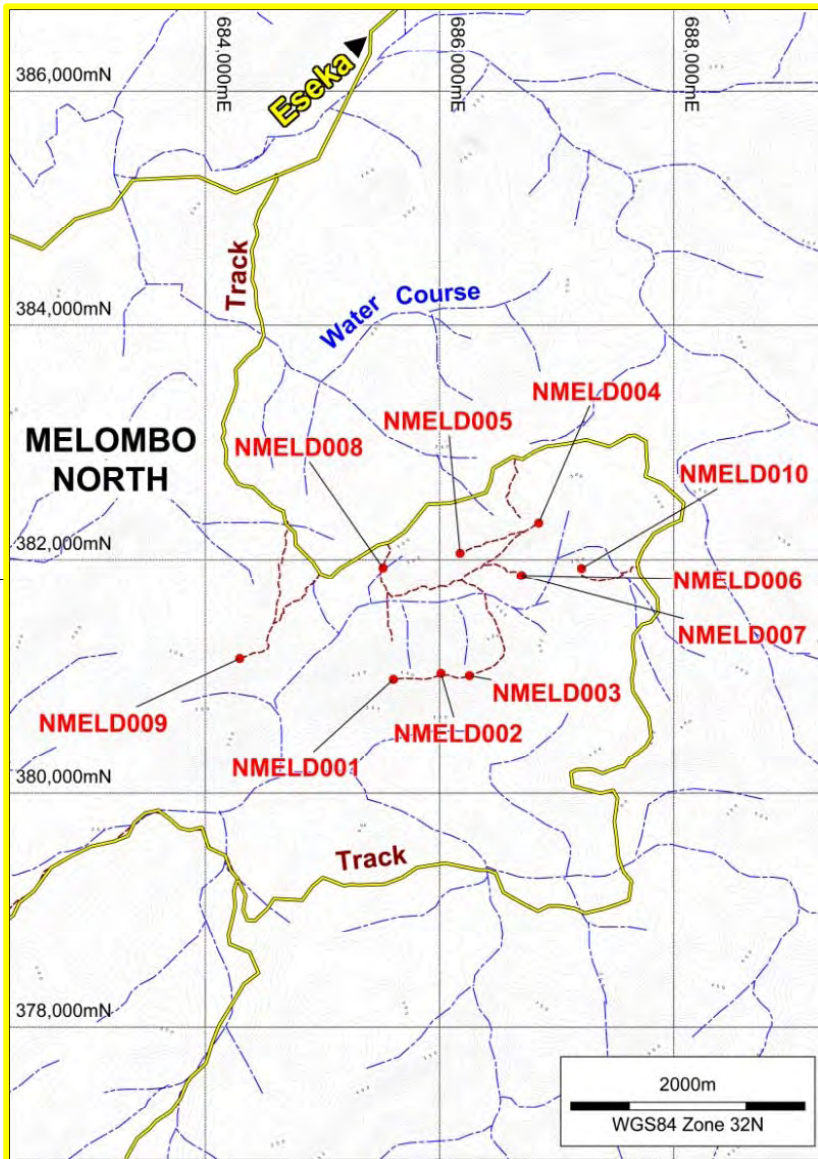


For personal use only



Ngovayang Project

Melombo North Target Drilling



NMELD 002

94.85m @ 17.6% Fe

NMELD 007

58.42m @ 22.8% Fe

Magnetite intercepted in each drill hole

Further modelling to assist interpretation

Ngovayang Project

First Metallurgical Test Results



Average DTR Product Grade for Sample Met1								
Product	Mass %	Fe Distribution%	Fe%	SiO ₂ %	Al ₂ O ₃ %	P%	S%	LOI%
Head	100	100	31.45	47.48	2.98	0.097	0.070	-0.89
Concentrate	36.8	82.7	70.8	1.42	0.20	0.006	0.028	-3.30

Coarse Grain

Coarse Grind
Low Power Cost

Low Impurities

Simple Process
Low Cost

High Iron

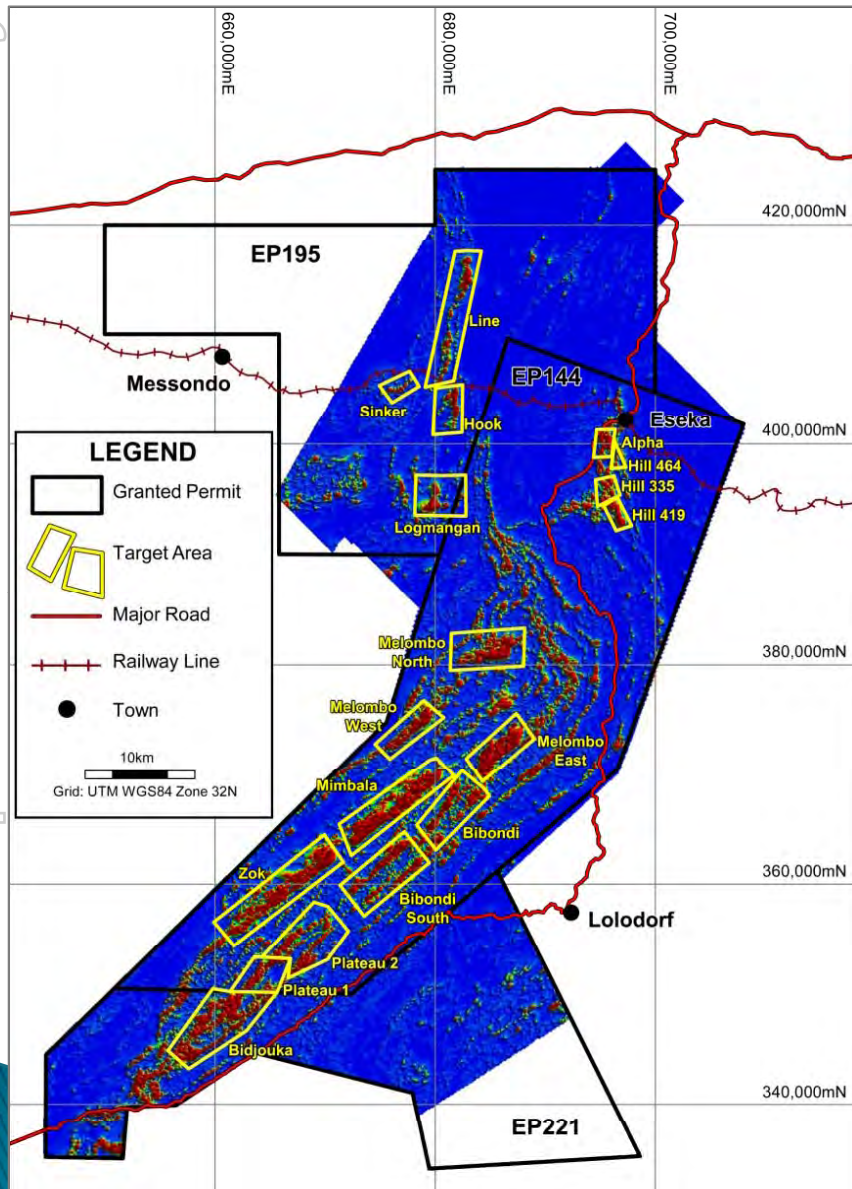
Saleable Product



Magnetite Gneiss Core – Hole NESD011 (sample MET1)

For personal use only

Exploration Upside/ Summary



- Magnetite Gneiss identified as host rock
- Positive Metallurgical Test/Quality Magnetite
- DSO Potential
- Drilling ongoing
- Reconnaissance work ongoing

