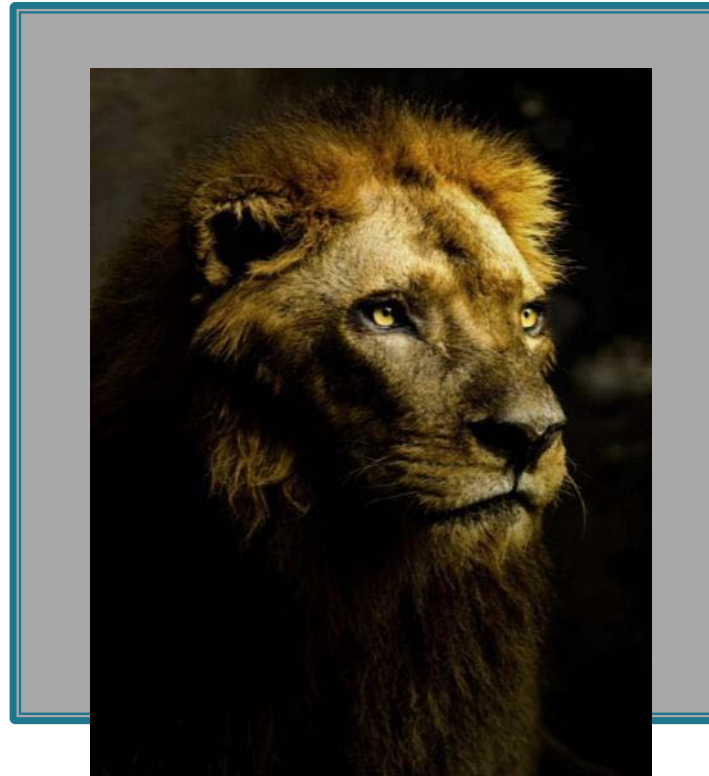


For personal use only

Legend
mining limited



“Legend, Cameroon, Iron Ore”

Disclaimer



For personal use only

This is not a disclosure document. Any material used in this presentation is a summary of selected data, and any investor in Legend Mining Limited should refer to all Legend Mining Limited ASX releases and statutory reports before considering to invest in the company.

Any forward looking information in this presentation has been prepared on the basis of a number of assumptions that may prove not to be correct. Neither Legend Mining Limited, nor its officers, employees and advisors make or give any representation, warranty or guarantee in relation to this presentation.

Legend Mining Limited reserves the right to update, amend or supplement the Information in this presentation at any time in its absolute discretion without incurring any obligation to do so.

The information in this presentation that relates to exploration results is based on information compiled by Mr Derek Waterfield who is a member of the Australian Institute of Geoscientists and is a consultant to Legend Mining Limited.

Mr Derek Waterfield has sufficient experience which is relevant to the style of mineralisation and type of deposit under consideration and to the activity which he is undertaking to qualify as a Competent Person as defined in the 2004 Edition of the 'Australasian Code for Reporting of Exploration Results, Mineral Resources and Ore Reserves' (the JORC Code).

Mr Derek Waterfield consents to the inclusion in this presentation of the matters that relate to exploration results which in the form and context in which it appears.

Legend Board



Chairman
Michael Atkins



**Managing
Director**
Mark Wilson



**Non-Executive
Director**
Dermot Ryan

Capital Structure



Shares	1,740 M
Options	391M @ 4c (04/02/2015) 30M @ 6c (04/02/2015) 11.4M Employee Options 800M Performance Options (04/02/2015)
Cash (incl. Shares)	+\$11.4M (30/06/2011)
Capitalisation	\$61M @ \$0.035 (12 month range \$40-170M)

Introduction

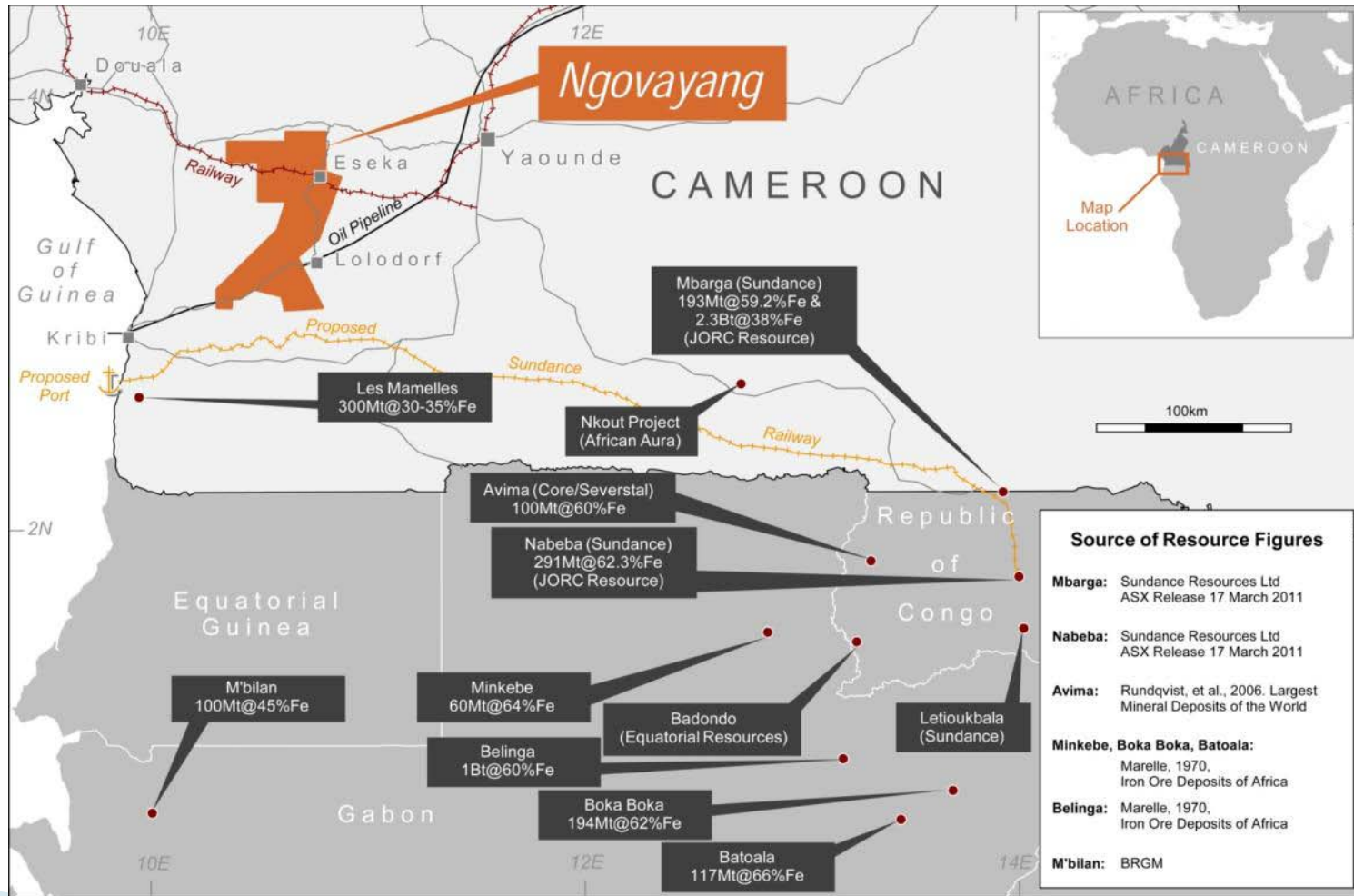


- **Mineral Exploration Company with a strong cash position**
- **Focussed on Iron Ore in West Africa**
- **3900km² in two project areas in Cameroon**
- **One project area in Western Australia**
- **Management strategy for growth**
 - **Delineate magnetite resource whilst continuing the search for DSO in Cameroon**
 - **Further project acquisition**

Regional Iron Ore Prospective



For personal use only



Cameroon Project



People

Infrastructure



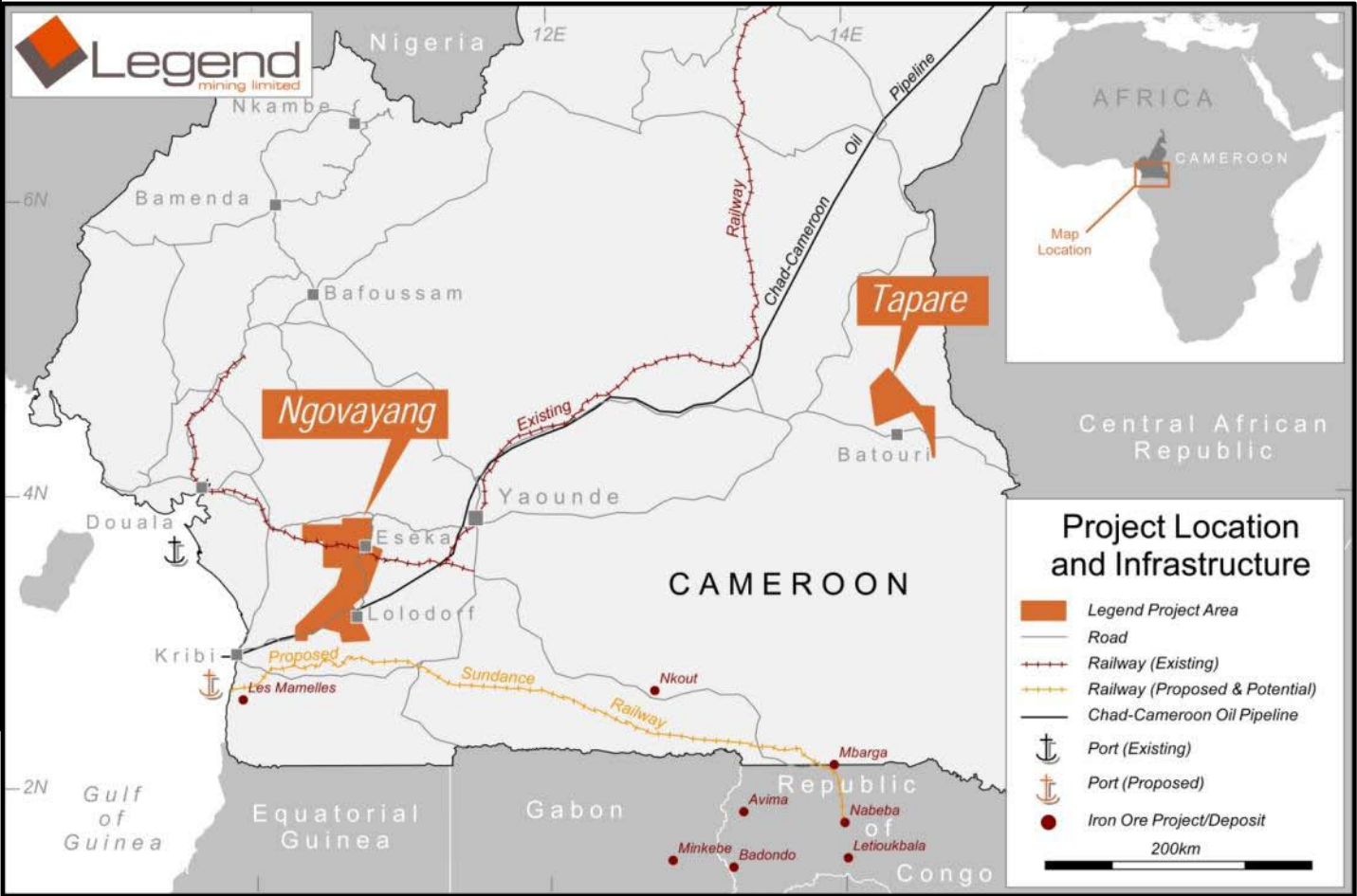
Project Size

Iron Ore Prospectivity

Location / Infrastructure



For personal use only

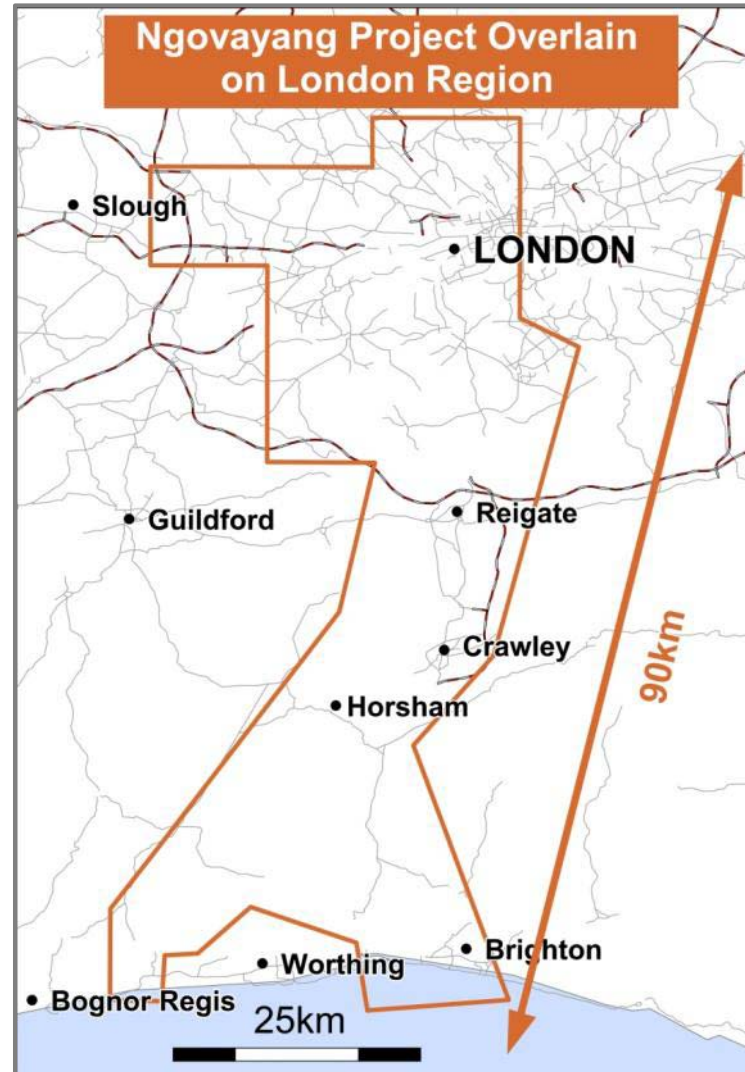


Sundance Ltd Access
Co-operation
Agreement
May 2011

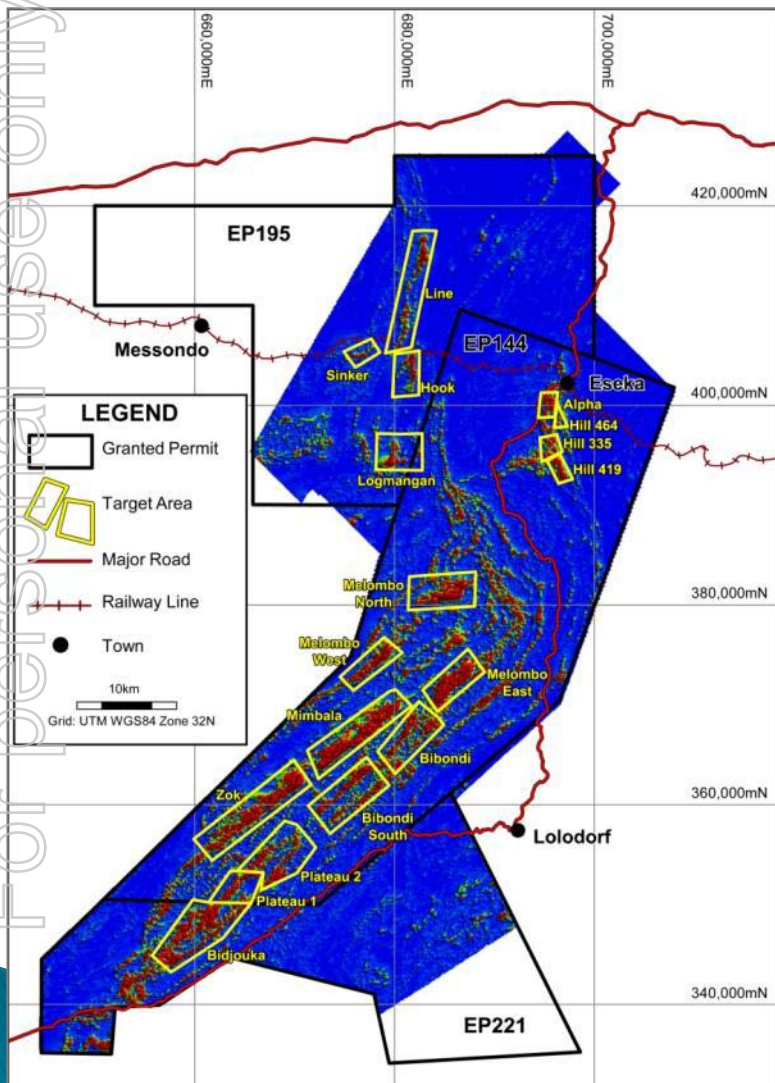
Ngovayang Project Size



For personal use only



Ngovayang Project Prospectivity



2972km² contiguous area held by three granted exploration permits

Extensive aeromagnetic survey completed February 2010

Red indicates highest total magnetic intensity

Red areas much more extensive than indicated by previous mapping (BRGM 1986)

Exploration Activity Summary

Ngovayang Project

First Metallurgical Test Results



Average DTR Product Grade for Sample Met1

Product	Mass %	Fe Distribution%	Fe%	SiO ₂ %	Al ₂ O ₃ %	P%	S%	LOI%
Head	100	100	31.45	47.48	2.98	0.097	0.070	-0.89
Concentrate	36.8	82.7	70.8	1.42	0.20	0.006	0.028	-3.30

Coarse Grain

Coarse Grind
Low Power Cost

Low Impurities

Simple Process
Low Cost

High Iron

Saleable Product



Magnetite Gneiss Core – Hole NESD011 (sample MET1)



Niton Gun

Internal Study



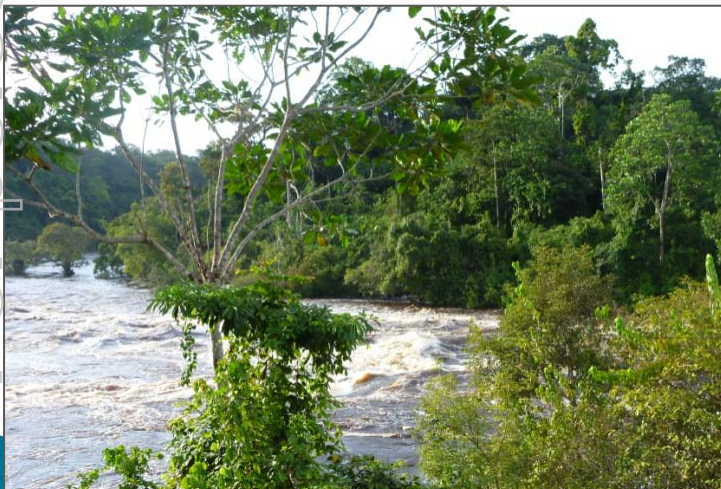
For personal use only

Inputs

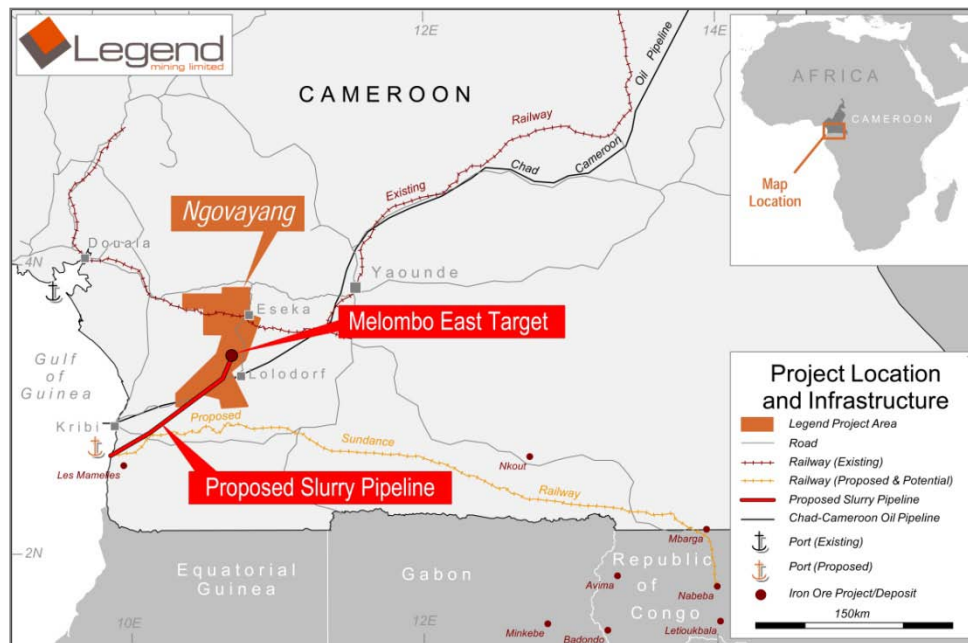
- ❑ Assumed location at Melombo East
- ❑ Assumed metallurgy from March 2011 test work
- ❑ Independent consultants conducted study

Outputs

- ❑ Capex <US\$1B
- ❑ Opex <US\$50/t concentrate



Nyong River

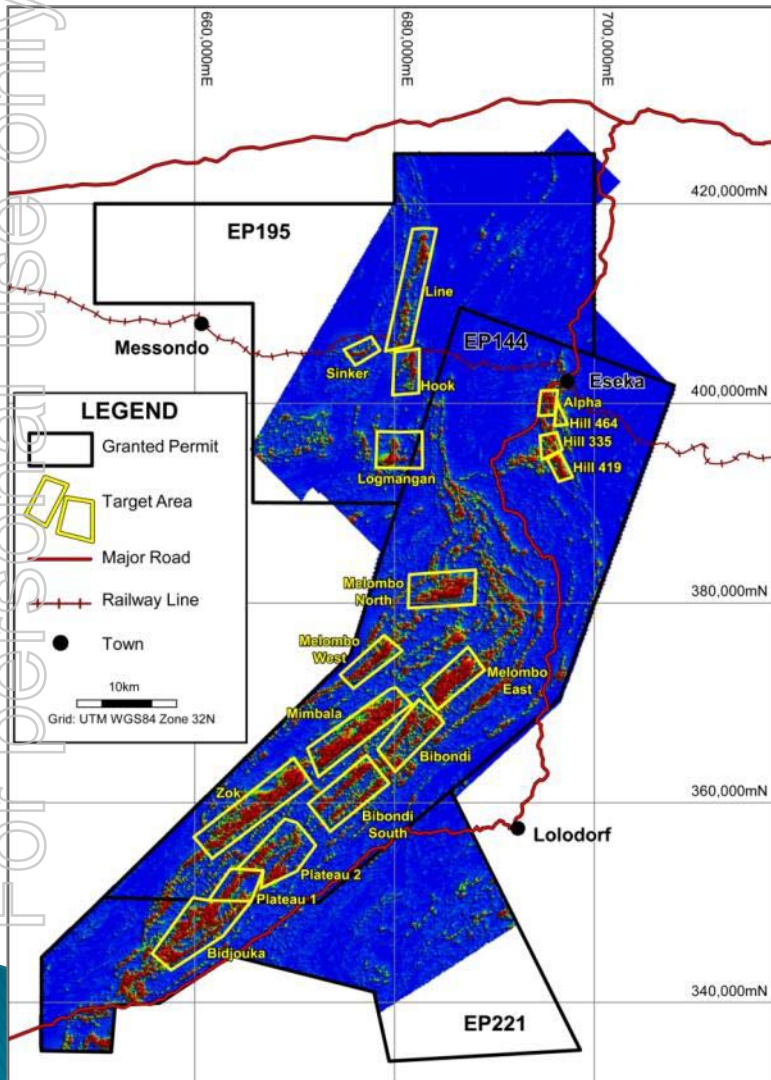


Cameroon Project Location and Infrastructure

Takeaways

- ❑ Highlights quality of magnetite concentrate
- ❑ Highlights advantages of location & Infrastructure
- ❑ Highlights multi deposit potential of Project

Exploration Upside/ Summary

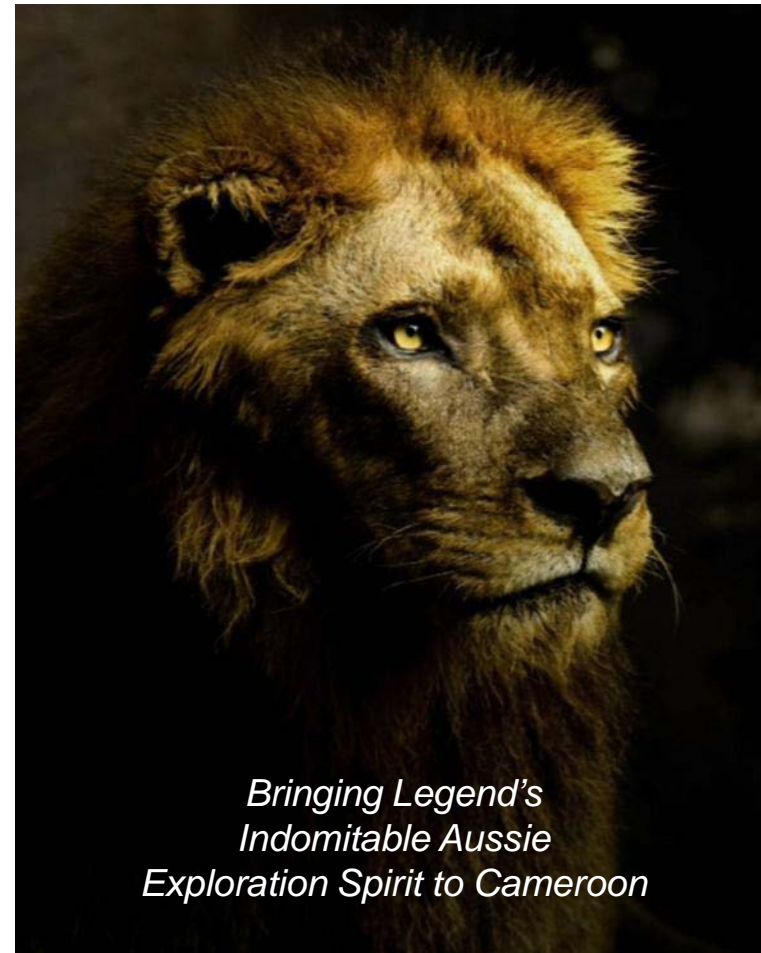


- ❑ Magnetite Gneiss identified as host rock
- ❑ Positive Metallurgical Test/Quality Magnetite
- ❑ DSO Potential
- ❑ Drilling ongoing
- ❑ Reconnaissance work ongoing





CAMEROON
*the home
of the
INDOMITABLE LIONS*



*Bringing Legend's
Indomitable Aussie
Exploration Spirit to Cameroon*